



FOR LEASE | OFFICE/WAREHOUSE SPACE



Bay B/C 1135 44 Avenue SE

AVAILABLE: Immediately

Calgary, Alberta

Municipal Address

Bay B/C, 1135 44 Avenue SE,
Calgary, Alberta

Legal Description

Plan 7810587, Block 11 Lot 10

Area

6,144 sq. ft.

Operating Costs

\$5.53 / sq. ft. (2023 CAM & Tax)

Power

200A, 120/208V, three phase, four wire

Ceiling Height

18' 3" H
5.563m H

Bay Dimensions

64' W x 94'9" L
19.507m W x 28.880m L

Loading & Access

Two (2) Dock Height 9'3" H x 8'0" W

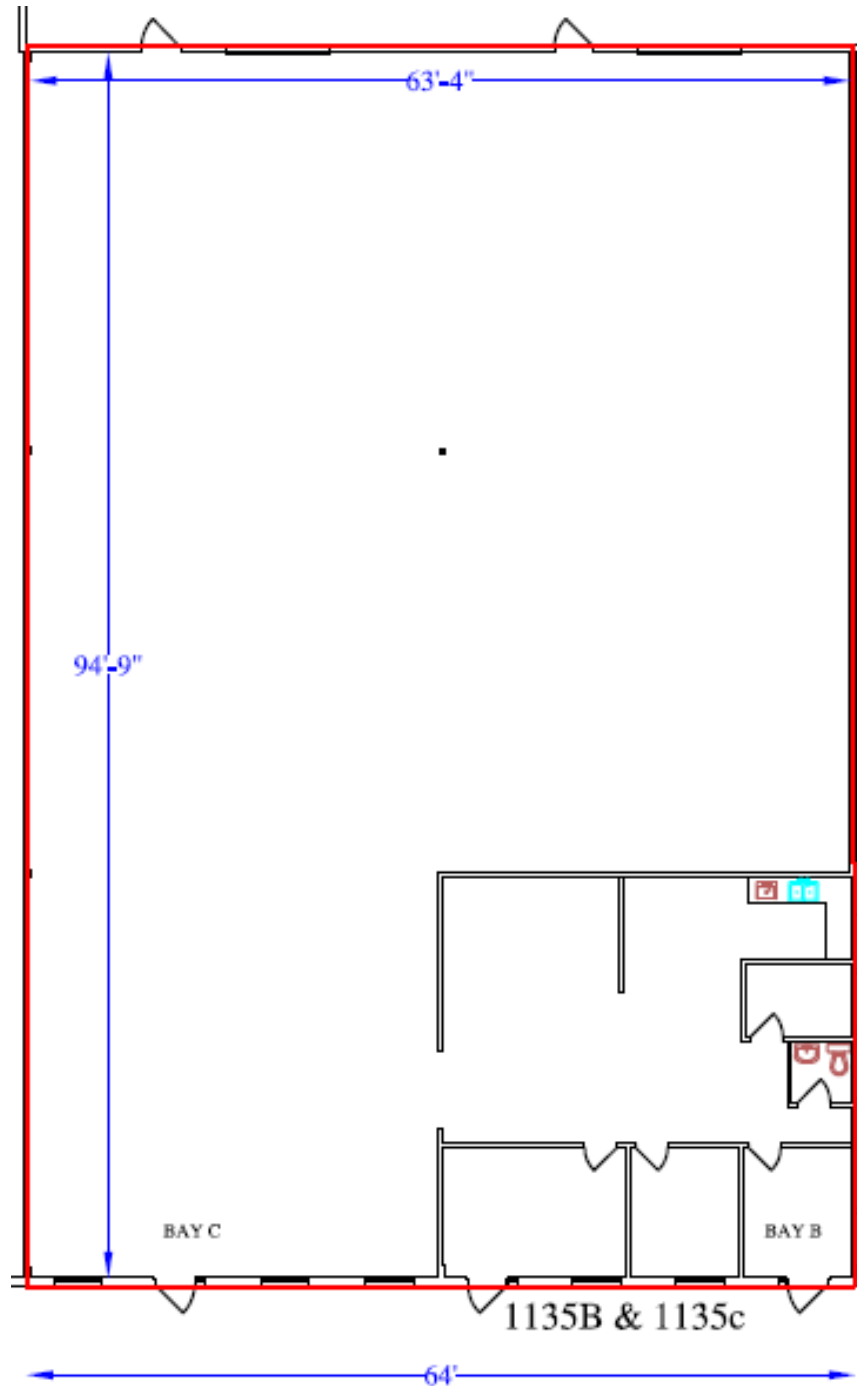
The information contained herein may change and the property removed from the market at any time without prior notice.
It has been obtained from sources believed to be correct but does not form part of any present or future contract.



Bay B/C 1135 44 Avenue SE

AVAILABLE: Immediately

Calgary, Alberta



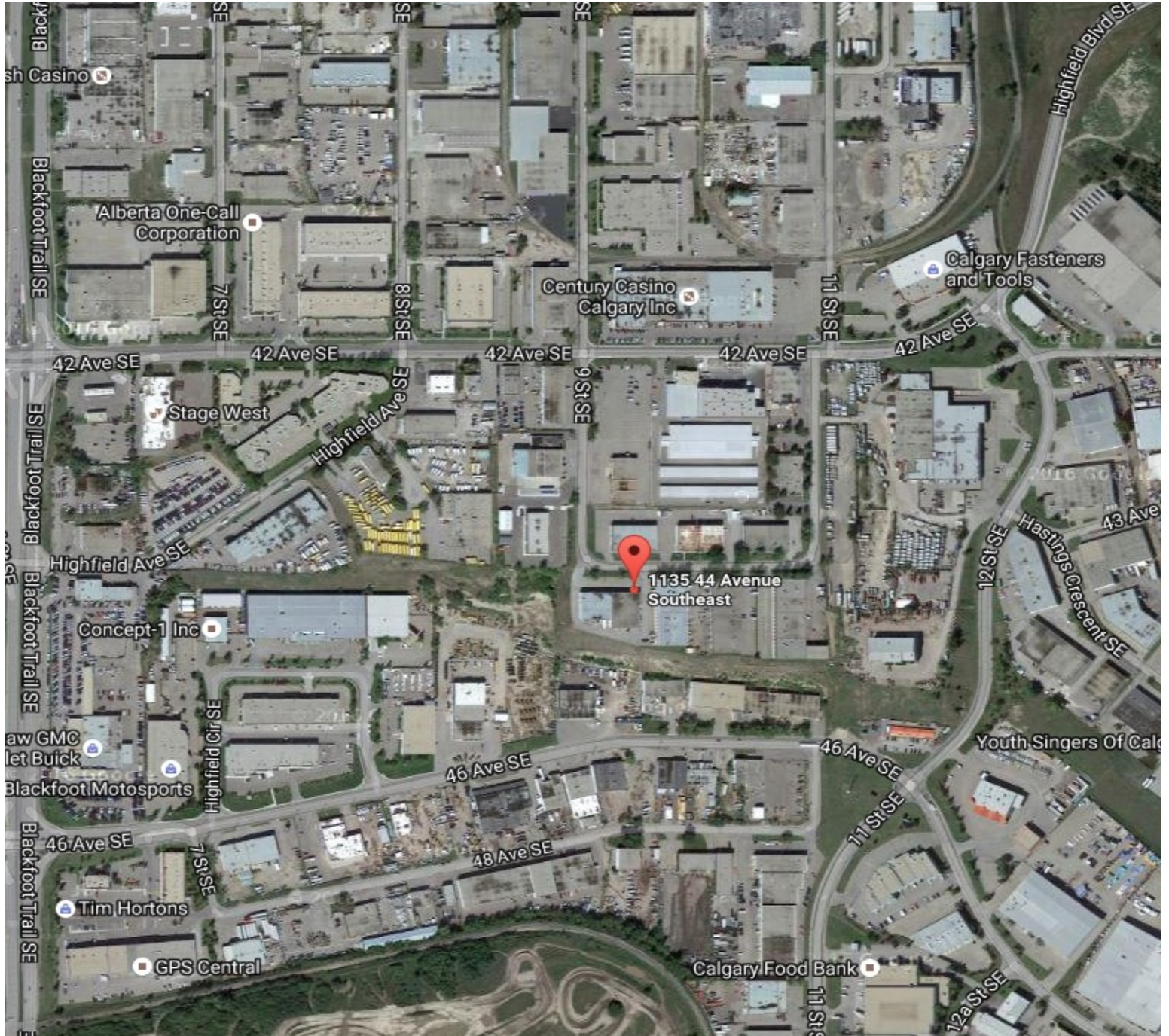
The information contained herein may change and the property removed from the market at any time without prior notice. It has been obtained from sources believed to be correct but does not form part of any present or future contract.



Bay B/C 1135 44 Avenue SE

AVAILABLE: Immediately

Calgary, Alberta



The information contained herein may change and the property removed from the market at any time without prior notice.
It has been obtained from sources believed to be correct but does not form part of any present or future contract.